

# Übersicht empfehlenswerter Tumormarker: erste Wahl, zweite Wahl, Einsatz möglich


**HNO:**  
SCC, CEA, TPA



**Kehlkopf:**  
SCC, CEA



**Lunge:**  
CYFRA 21-1<sup>[1]</sup>, NSE Pro GRP, CEA, SCC, CA 72-4, TPA, AFP, Calcitonin



**Oesophagus:**  
SCC, CEA



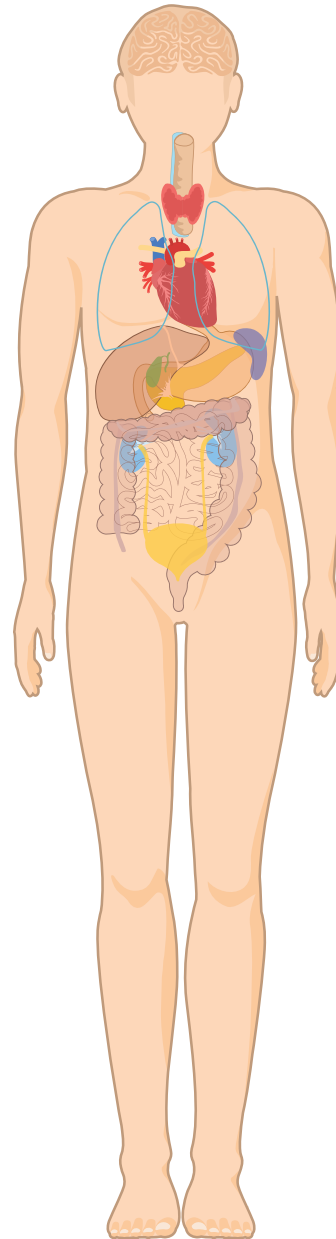
**Leber:**  
AFP, AFP-L3/DCP, CA 19-9, CEA




**Prostata**  
PSA



**Hoden:**  
AFP,  $\beta$ -CCG (nicht Seminom), PLAP (Seminom), CEA, NSE

**Schilddrüse:**  
Calcitonin, Thyreoglobulin, CEA, TPA



**Gallenwege:**  
CA 19-9



**Pankreas:**  
CA 19-9, CEA




**Niere:**  
TPA



**Haut:**  
S-100 Protein



**Blase:**  
TPA, CYFRA 21-1, UBC, CEA,




**Magen:**  
CEA, CA 72-4, CA 19-9, TPA




**Dickdarm:**  
CEA, CA 19-9




**Mamma:**  
CA 15-3, CEA, TRA



**Neuroendokrine Tumore:**  
NSA, Chromogranin A




**Teratom:**  
AFP,  $\beta$ -HCG, TPA




**Chorion:**  
 $\beta$ -HCG, AFP




**Ovar:**  
HE4, CA 125, CA 72-4,  $\beta$ -HCG, CA 19-9, CEA, AFP, CA 15-3



**Knochen:**  
Knochen-AP (BAP), Osteocalcin



**Uterus Cervix:**  
SCC, CEA, CA 15-3, CA 72-4, CA 125, TPA



**Lymphon/Plasmozytom:**  
 $\beta_2$ -Mikroglobulin, Thymidinkinase, LDH



[1] nur bei Kleinzellern

[2] im Urin